

Erin Trefry

Happy Phantom

January 27 - March 2, 2024

Erin Trefry, *Causeway across the sea* (detail), 2024

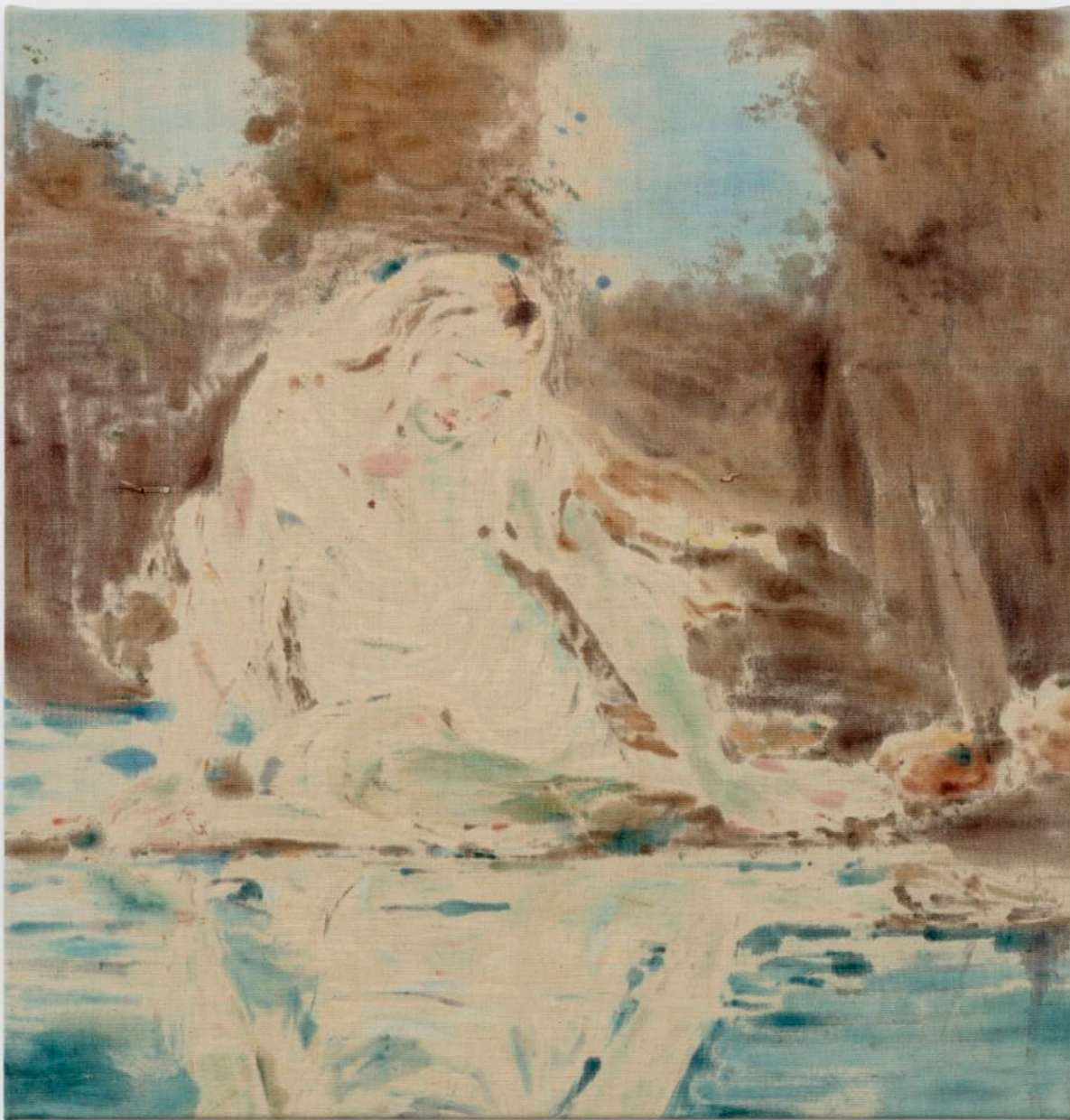


Lowell Ryan Projects is pleased to present *Happy Phantom*, an exhibition by Los Angeles-based artist Erin Trefry. Comprised of a series of eleven figurative paintings in muted tones, Trefry continues her exploration of sentiment, time, and figuration particularly in relation to familial narratives and relationships. On view from January 27th to March 2nd, 2024, this is Erin Trefry's third solo exhibition at the gallery.

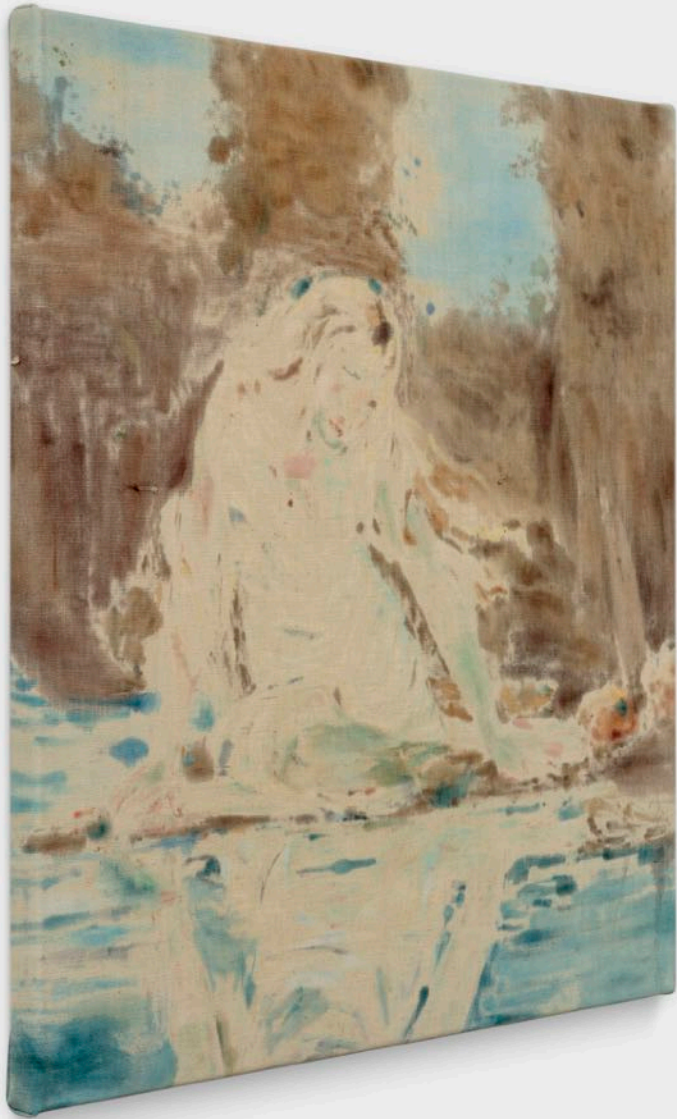
In this exhibition, Trefry presents her great-grandmother's paintings, which were originally created in the late 19th century, and depict figurative scenes of romantic settings, exotic locales, and fantastical narratives. These works were passed down through the generations eventually landing in Trefry's possession. The family does not know much about their late relative's motivations; however, they are aware that she was self-taught and that the paintings were shown at carnivals and hung like tapestries. In *Happy Phantom* Trefry subverts the imagery of her late relative, the paintings are presented stretched in reverse so that the viewer is only able to see the backside of the works where the paint has bled through the fabric. Behind the paintings, a layer of muslin conceals the surfaces of the original paintings.

With *Happy Phantom*, Trefry poses questions. How do we understand and make sense of our history? How do we understand cultural trends through the context of their era? How do we interpret modern day moral and societal critiques in light of our own familial histories? What are the implications of concealing the past? Who do we grant the power to tell these narratives? These artworks elevated to the status of visual artifacts, resonate with avant-garde principles reminiscent of Dadaism and Duchampian conceptualism. Blending joy with mystery and critique with homage, Trefry contemplates prevailing philosophical questions through a sentimental whisper of the past.

For more information please contact: info@lowellryanprojects.com



Erin Trefry
Causeway across the sea
2024
Oil on cotton fabric
29h x 28w inches
74.7h x 71.1w cm



Erin Trefry
Causeway across the sea (side view), 2024





Erin Trefry, *Folklore, myths and fables*, 2024



Erin Trefry
Folklore, myths and fables (detail)
2024
Oil on cotton fabric
45h x 70w inches
114.3h x 177.8w cm



Erin Trefry, *A tale of giant tricks*, 2024



Erin Trefry
A tale of giant tricks (detail)
2024
Oil on cotton fabric
43h x 63w inches
109.2h x 160w cm

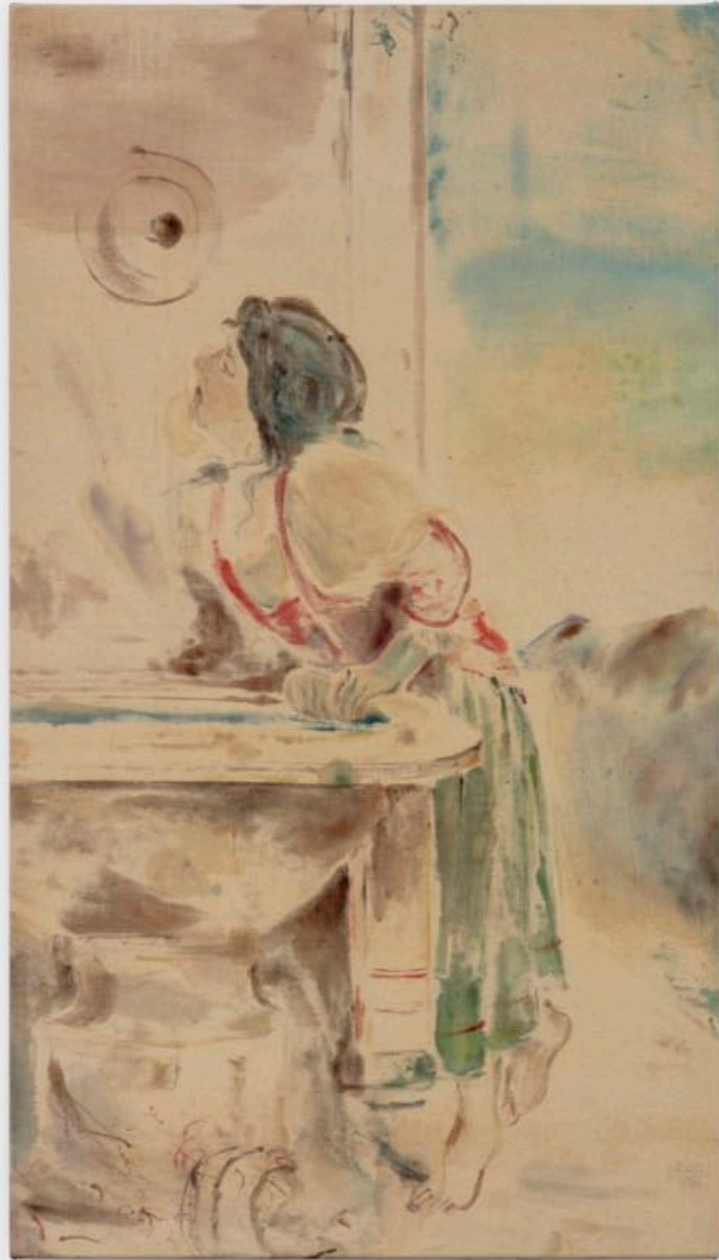




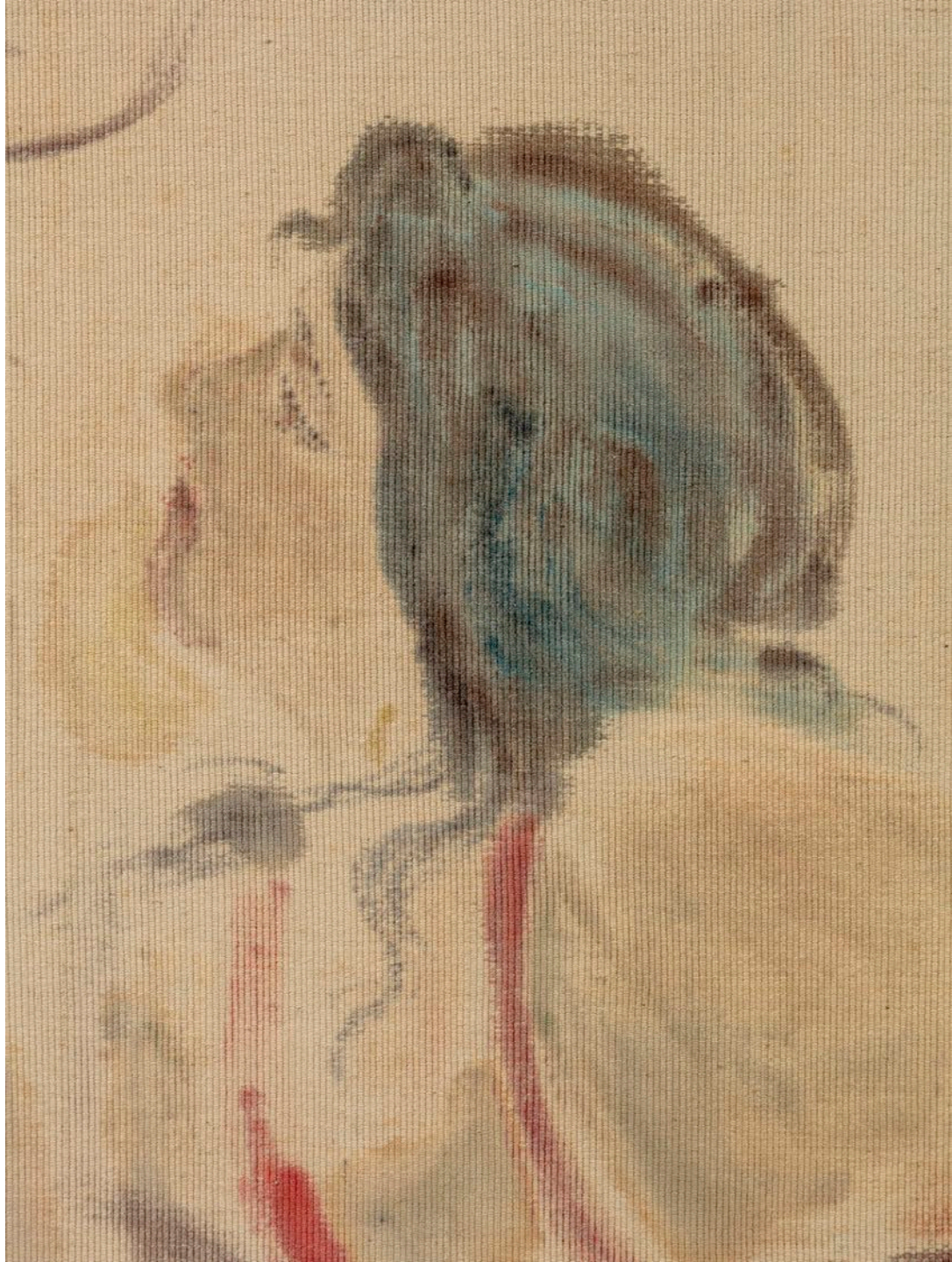
Erin Trefry
*She dug a huge piece of earth
out of the ground*
2024
Oil on cotton fabric
45h x 56w inches
114.3h x 142.2w cm

Erin Trefry, *She dug a huge piece of earth out of the ground*, 2024

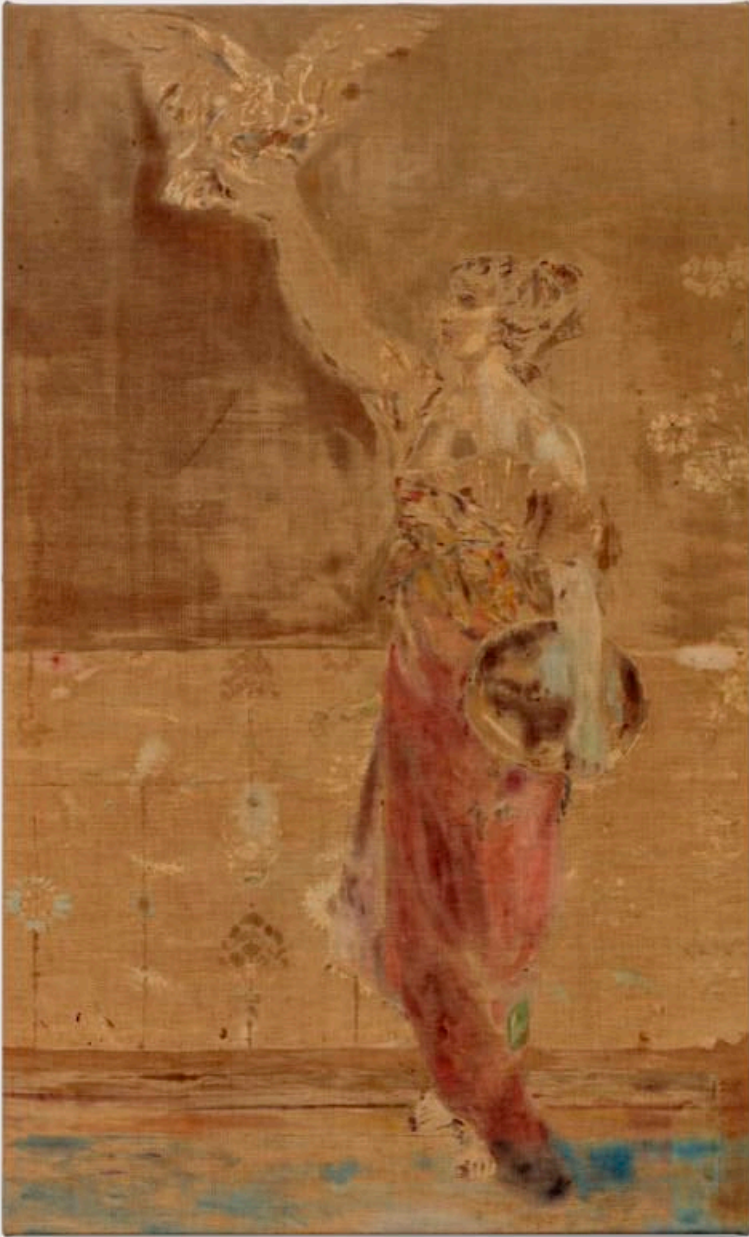




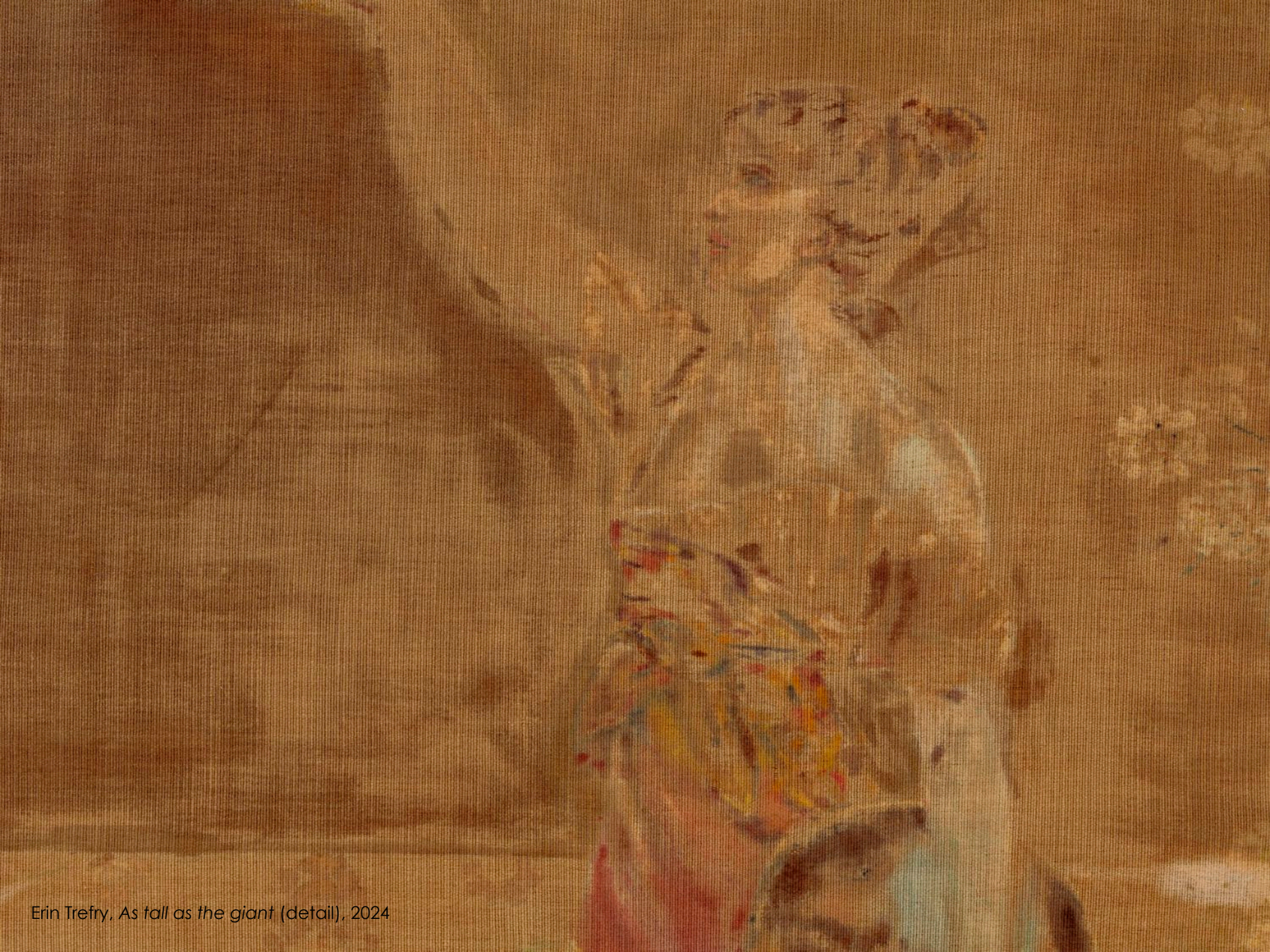
Erin Trefry
Cooked with iron inside
2024
Oil on cotton fabric
45h x 25 1/2w inches
114.3h x 64.8h cm



Erin Trefry, *Cooked with iron inside* (detail), 2024



Erin Trefry
As tall as the giant
2024
Oil on cotton canvas
46h x 28w inches
116.8h x 71.1w cm



Erin Trefry, *As tall as the giant* (detail), 2024





Erin Trefry, *Nest of salt*, 2024



Erin Trefry
Nest of salt (detail)
2024
Oil on cotton fabric
45h x 64w inches
114.3h x 162.6w cm





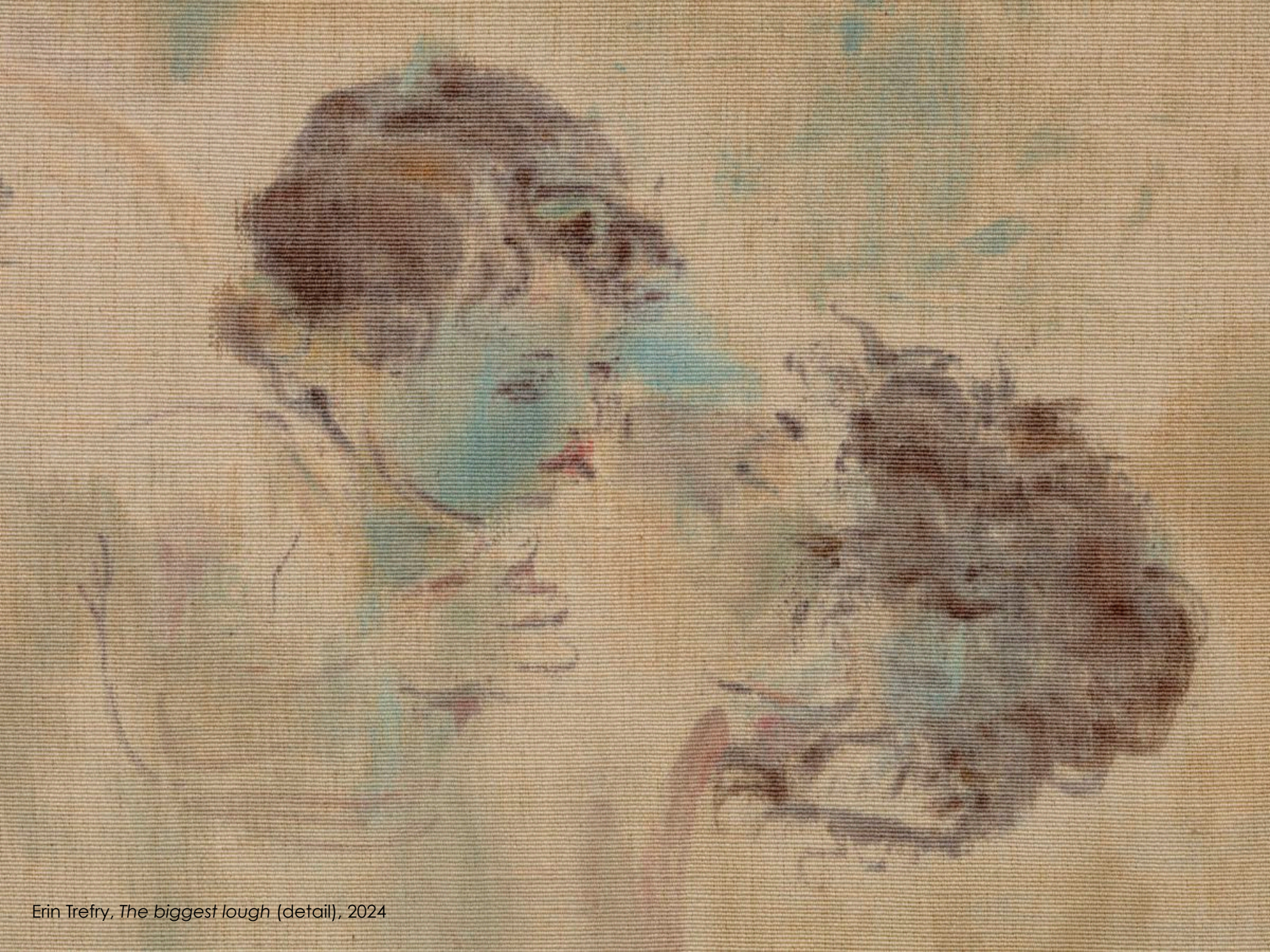
Erin Trefry
Happy phantom
2024
Oil on cotton fabric
53h x 45w inches
134.6h x 114.3w cm



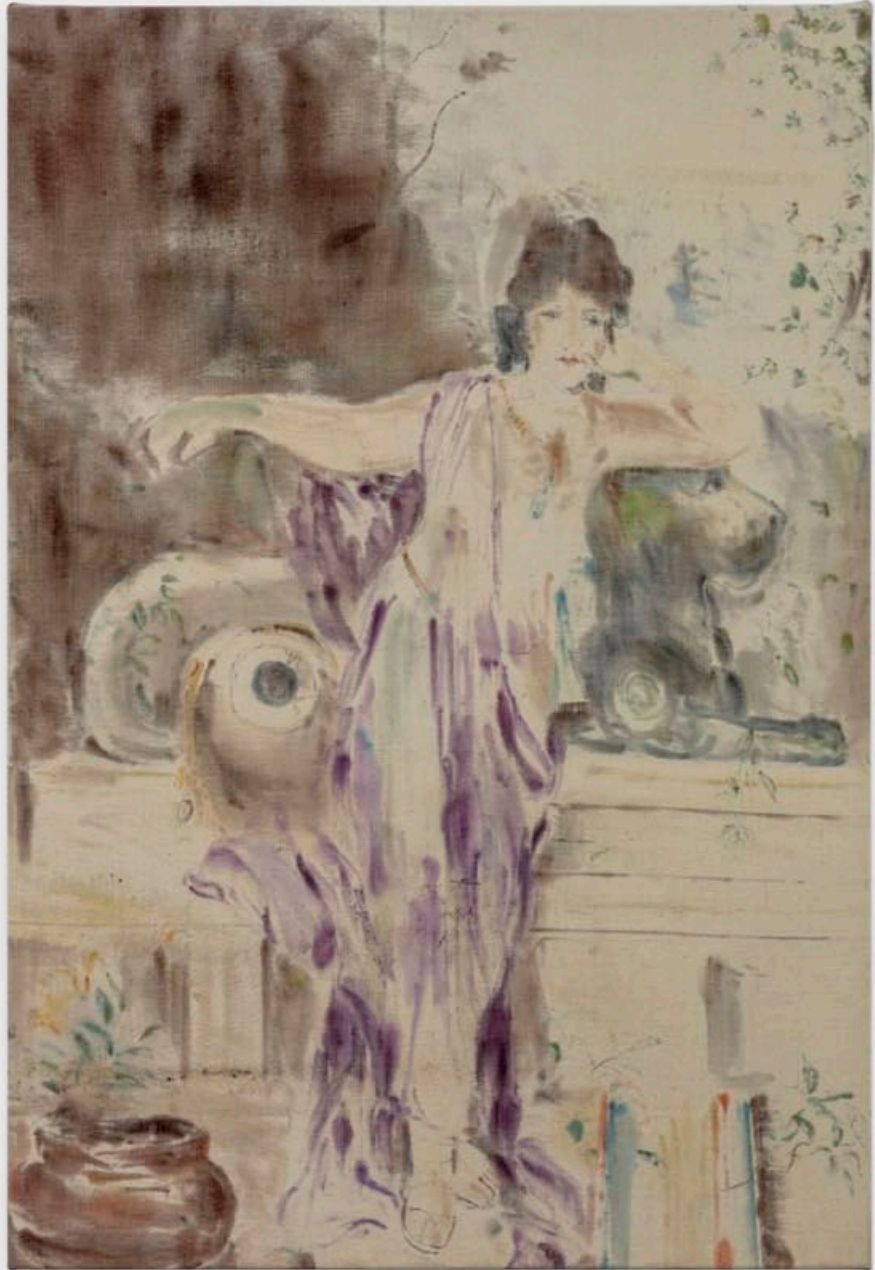
Erin Trefry, *Happy phantom* (detail), 2024



Erin Trefry
The biggest lough
2024
Oil on cotton fabric
28h x 45w inches
71.1h x 114.3w cm

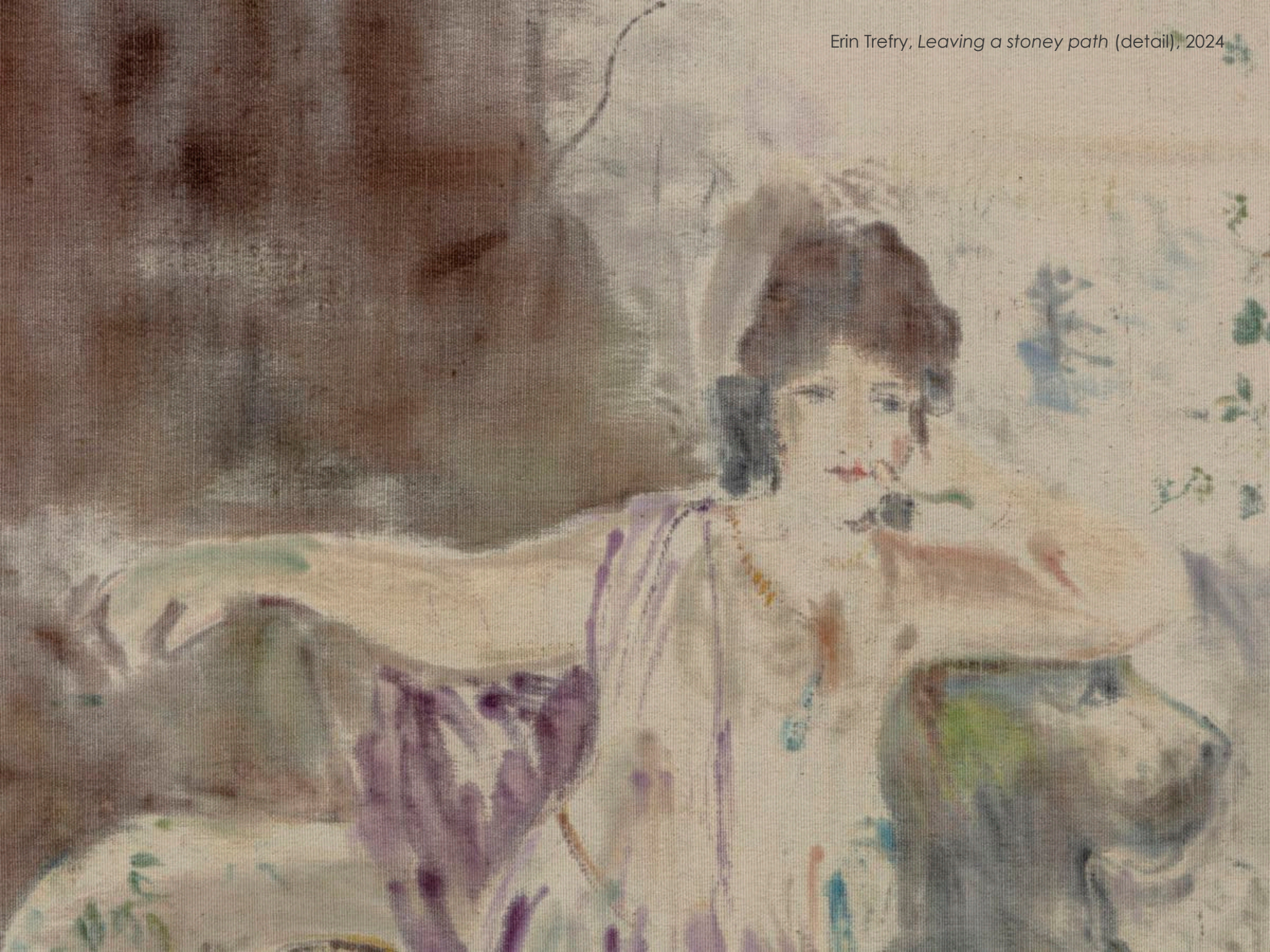


Erin Trefry, *The biggest lough* (detail), 2024



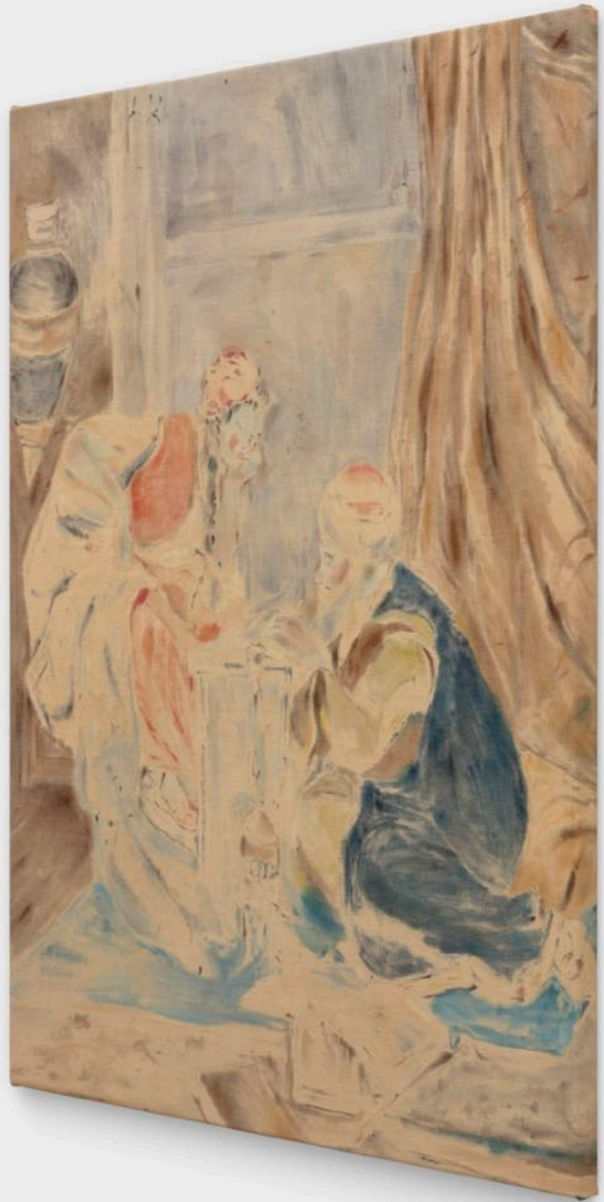
Erin Trefry
Leaving a stoney path
2024
Oil on cotton fabric
44h x 30w inches
111.8h x 76.2w cm

Erin Trefry, *Leaving a stoney path* (detail), 2024

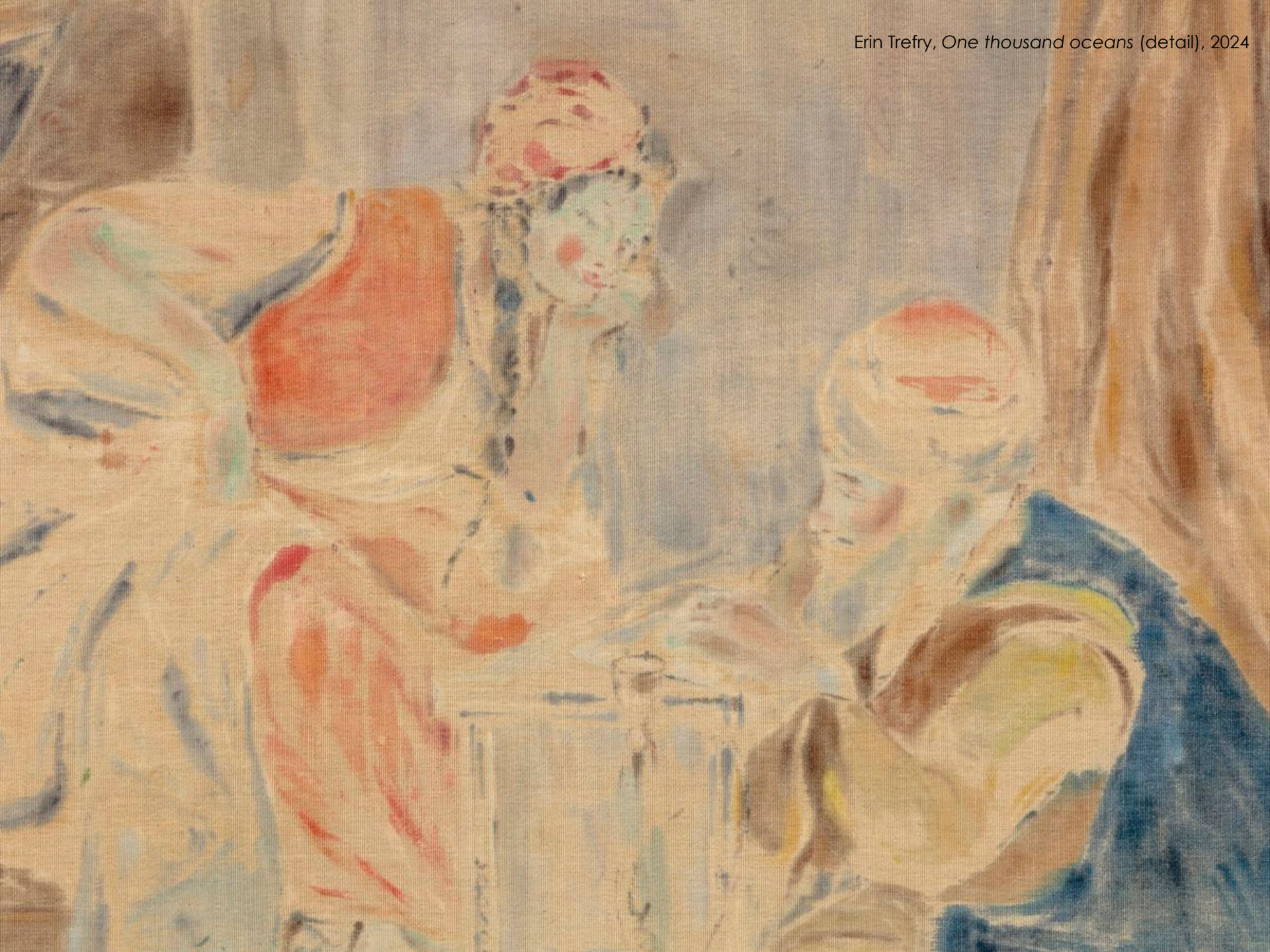




Erin Trefry
One thousand oceans
2024
Oil on cotton fabric
45h x 35w inches
114.3h x 88.9w cm



Erin Trefry, *One thousand oceans (side view)*, 2024



Erin Trefry lives and works in Los Angeles, CA, and received her BFA from Maryland Institute College of Art. Trefry's personally charged practice includes painting, sculpture, and assemblage that combine ceramic, inherited objects, and clothing to create paintings, totems, mask-like wall pieces, and transient structures. Trefry has exhibited at galleries and institutions including Lowell Ryan Projects, Los Angeles, CA; Altman Siegel Gallery, San Francisco, CA; No Gallery, Los Angeles, CA; TSA LA, Los Angeles, CA; 0-0 LA, Los Angeles, CA; Institute of Contemporary Art, Los Angeles, Los Angeles, CA; Monte Vista Projects, Los Angeles, CA; ODD ARK•LA, Los Angeles, CA; Eastside International, Los Angeles, CA; Big Pictures Los Angeles, Los Angeles, CA; there-there, Los Angeles, CA; and Los Angeles Contemporary Exhibitions (LACE) Los Angeles, CA. Trefry's works have been reviewed and discussed in publications including *Artforum*, *The Los Angeles Times*, *LA Weekly*, and *Art and Cake*.

Erin Trefry in her Los Angeles, CA studio, 2024



